



Governing Over the Unexpected




Webinar Series: 2022/2023
Presented by: Angela L. Irwin, Owner
AirWin Educational Services, LLC



Brief Overview of Sessions



Refresher on 2022/2023 Webinar Series



Balancing the Unexpected with the Intentional

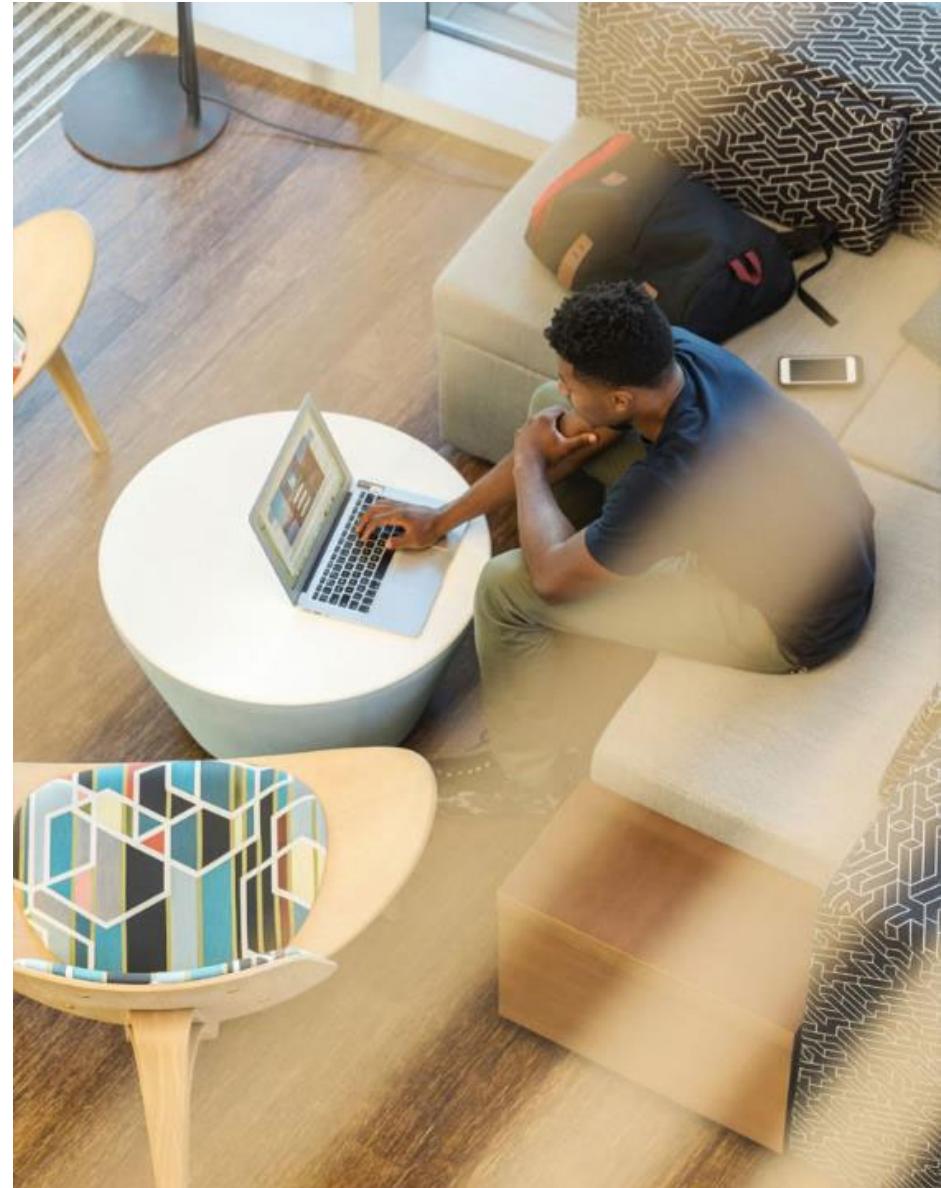
1. Watch for “signals”
2. Practice preemptive governance
3. Lean on knowledge

The background of the slide features a stack of papers or documents, viewed from an angle, creating a sense of depth and texture. The papers are primarily light-colored, possibly off-white or light blue, and are stacked in a way that shows the edges of many pages. To the left of the papers, there is a vertical gradient of colors, transitioning from a deep red at the top to a lighter, more orange-red at the bottom. The overall composition is clean and professional, with the text centered over the papers.

Watching for Signals

Signals – Identifying Them:

- Red flag issues
- Governance intuition – be attentive to this!
- Educational “landscape” issues
- Community conversation

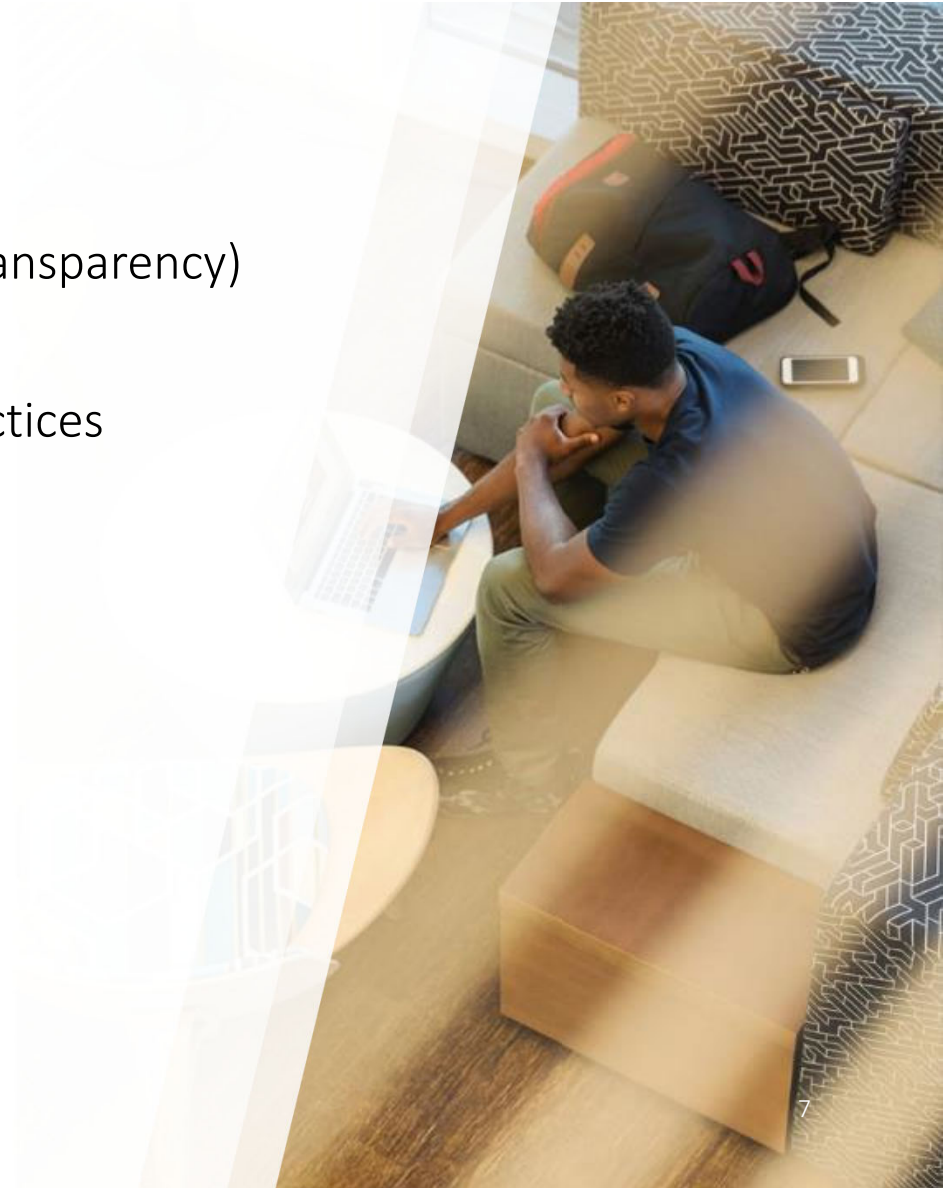


The background of the slide features a stack of papers on the right side, with a gradient of red and orange on the left side. The text is centered over the stack of papers.

Practice Preemptive Governance

Preemptive Governance:

- Clear expectations (i.e. roles, communication, transparency)
- Establish goals
- Ensure consistent use of processes/systems/practices
- Govern with policy
- Ask wise questions
- Build an effective board team

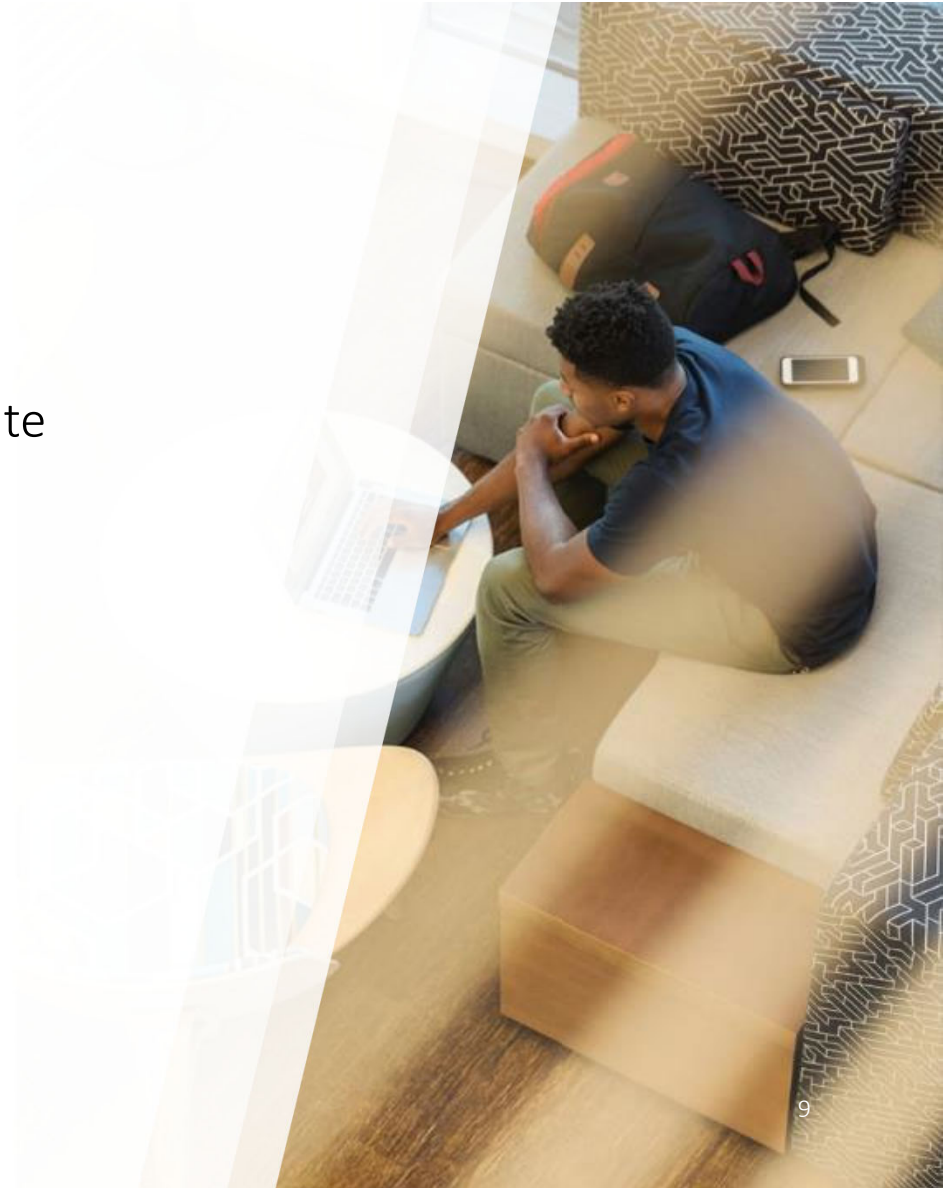


The image features a stack of books, viewed from a low angle, creating a sense of depth and volume. The pages are tightly packed and show a slight curve. The background is a gradient of warm colors, transitioning from a deep red on the left to a bright orange and yellow on the right. The text "Lean on Knowledge" is centered over the books in a clean, white, sans-serif font.

Lean on Knowledge

Lean on What you Know:

- Be confident in your board role
- Reflect on past experiences
- Refer to board policy as necessary and appropriate
- Base ultimate decisions on facts and reality
- Recognize when to involve legal counsel





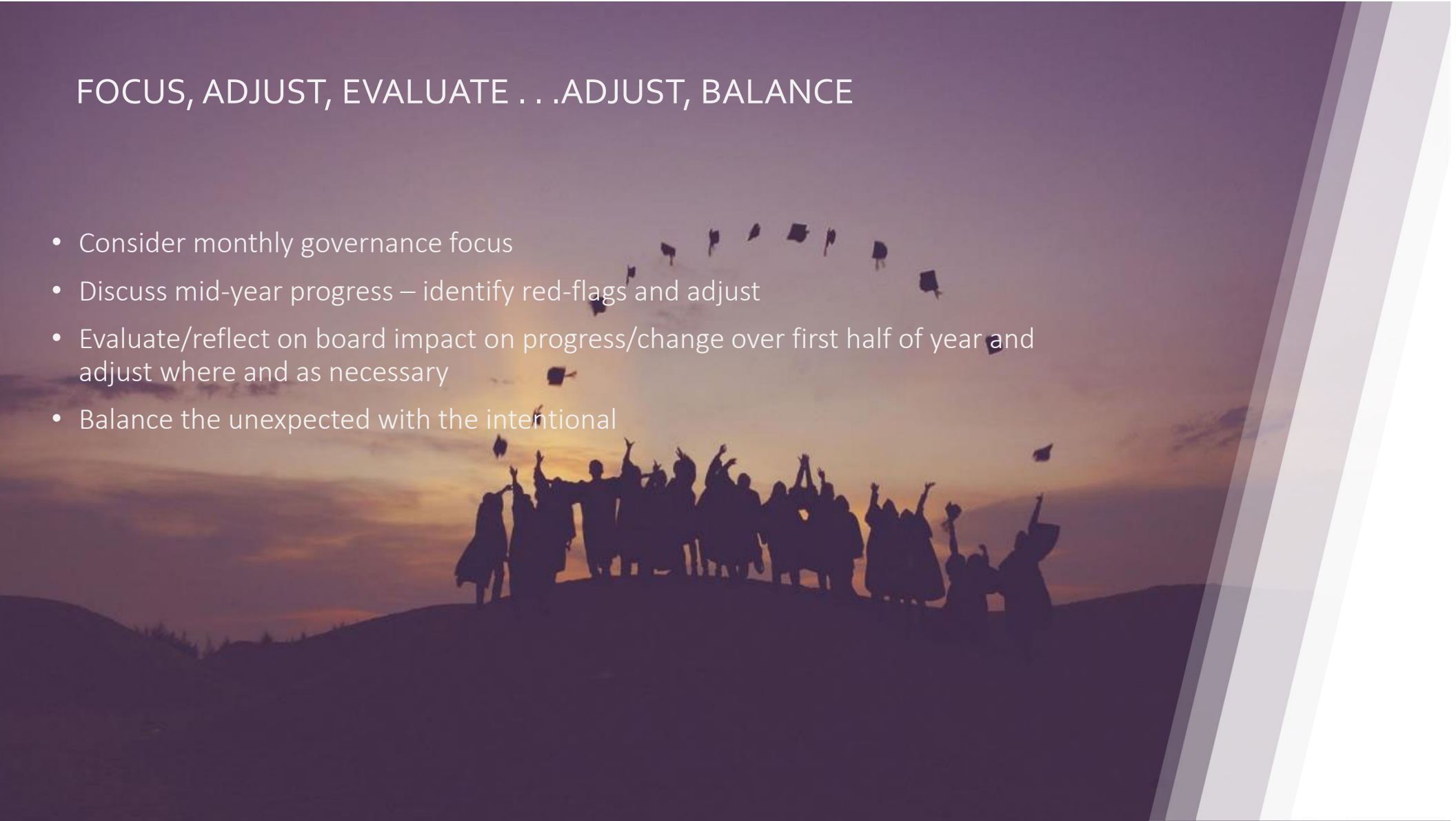
“Unexpected events can set you back or set you up. It’s all a matter of perspective.”

Mary Anne Radmacher



FOCUS, ADJUST, EVALUATE . . .ADJUST, BALANCE

- Consider monthly governance focus
- Discuss mid-year progress – identify red-flags and adjust
- Evaluate/reflect on board impact on progress/change over first half of year and adjust where and as necessary
- Balance the unexpected with the intentional



THANK YOU



Angela Irwin, President
AirWin Educational Services, LLC.



(989) 239-7555



angela@arwinllc.com